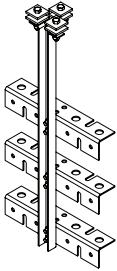
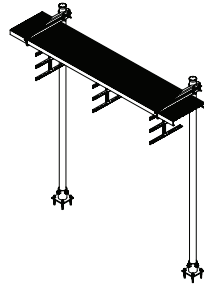


Marathon Site Hardware Accessories Cable Pathway

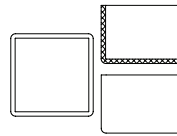
Marathon cable pathway products are part of our telecommunications site hardware offering. These industrial-grade products are available in the configurations needed to route cables across various site configurations.



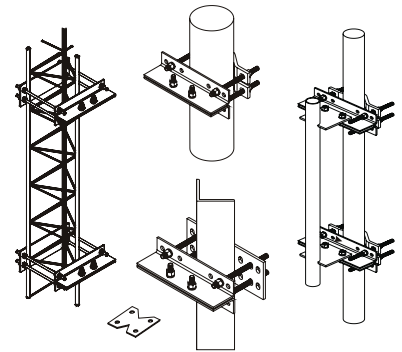
Trapeze kit



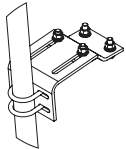
Waveguide Bridge Kit



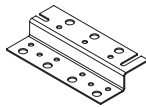
End caps



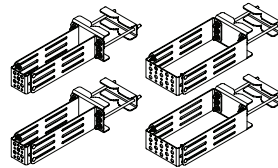
Universal Saddle Mounts



Slide Mount 2-3/8" OD Pipe



Cable Pathway



Universal RRU Mount Kit

Part Number	Product Description
MAR-ZBH4X	Horizontal Z Bracket for 4 Snap-In Hangers
MAR-PMSL2X	Slide Mount, 2-3/8" O.D. Pipe
MAR-RRUMBLX	Universal RRU Mount
MAR-SMU2080X	Universal Saddle Mount, 2" - 8" Legs, 2 Pack
MAR-WBK110BX	Waveguide Bridge Kit, 12" X 10', W/2 13'-4" Burial Posts Double Trapeze
MAR-WBK210BX	Waveguide Bridge Kit, 24" x 10', W/2 15'-4" Burial Posts, 3 Three-Tiered Trapeze Kits
MAR-WBT123X	Trapeze Kit, 12"+ Wide, 3 Rungs
MAR-ENDCAPW100	End Cap, White 1-1/2" x 1-1/2"
MAR-ENDCAPW78100	End Cap, White 7/8" x 1-5/8"

Please visit www.marathonbroadband.com for a comprehensive list of available site hardware accessory SKUs and spec sheets.