

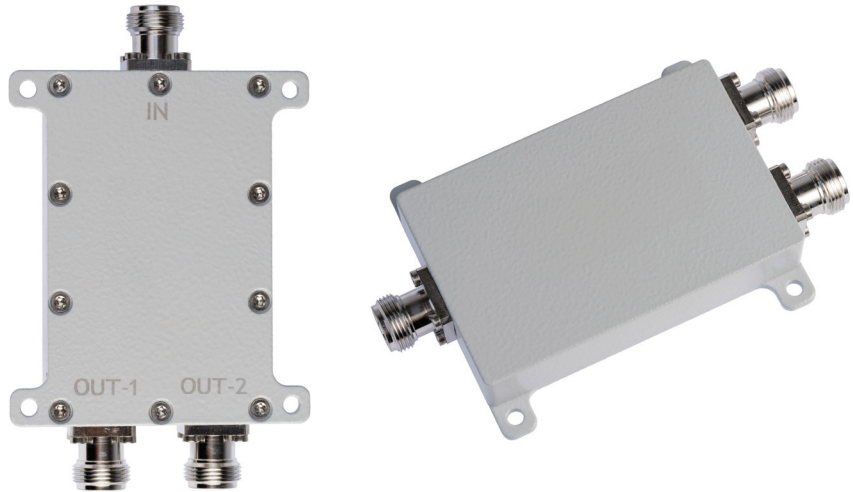
## Passive Components for Communications Networks

### Wilkinson Power Splitters - 2/3/4 Way

The Marathon line of Wilkinson-type power splitters are designed to evenly split high-power commercial cellular signals with minimal reflections or loss. They optimize power distribution for passive in-building DAS system deployments.

#### Notable Product Features

- Wide-band design, covers 617-2700MHz
- PIM Rated
- Compact size and light weight
- Easy to install
- Suitable for passive in-building DAS system deployments



MSW2-617-2700NF

Electrical Specifications			
Part # (N-Female Conn)	MSW2-617-2700NF	MSW3-617-2700NF	MSW4-617-2700NF
Frequency Range (MHz)	617-2700 MHz		
For Connecting Antennas	Two Way	Three Way	Four Way
Split Loss (dB)	3	4.8	6
Insertion Loss (dB)	≤ 0.5	≤ 0.7	≤ 0.8
VSWR @ Input port	≤ - 16.7/1.35:1 @ 617-698 MHz, ≤ - 8/1.3:1 @ 699-2700 MHz		
PIM3 (dBc)	≤ - 153 @2x43 dBm		
Input Power (W)	≤50		
Impedance (ohms)	50		

Mechanical Specifications			
Dimensions HxWxD (exclude conn)	93 mm (3.6 in.) x 79 mm (3.1 in.) x 26 mm (1 in.)	99 mm (3.9 in.) x 132 (5.2 in.) x 26 (1 in.)	140 (5.5 in.) x 167 (6.6 in.) x 26 (1 in.)
Weight (includes conn, mount)	0.33 kg (0.73 lb)	0.62 kg (1.37 lb)	1.01 kg (2.23 lb)
Color	RAL9004		
Mounting	Wall Mounted		

Environmental Specifications	
Operational Temperature	-25°C (-13°F) to +65°C (149°F)
Operational Humidity (%)	≤95
Environment	IP67
Application	Indoor and Outdoor
RoHS	Compliant

### Drawing reference

