

Product Reference Sheet

Closed Weave Cable Support Grips

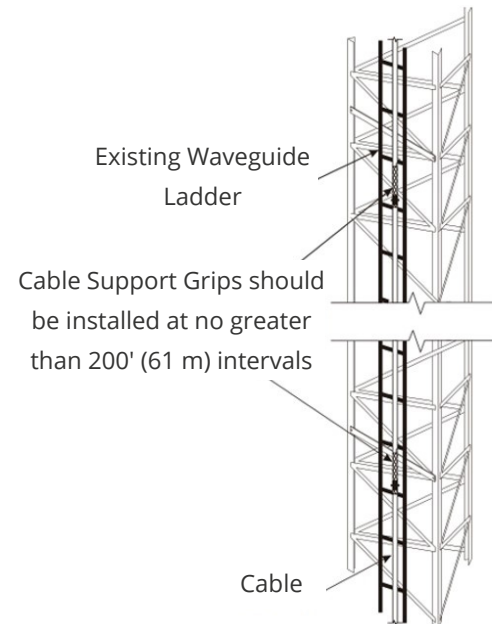
Product Description

Closed Weave Cable Support Grips provide an effective means for securing cable into position. The Closed Weave design makes it easy to install and cuts down installation time. Each kit includes a stainless steel Oetiker® clamp which reinforces the holding power of the grip. It also facilitates easy positioning at 200' (61 m) intervals maximum increments on long cable runs. Closed weave cable support grips are manufactured from Stainless Steel wires.

Typical Applications

Note:

Cable support grips should be affixed to a structural member engineered to support the cable loads. It is not recommended that cable support grips be reused. Consult technical support for any additional questions.



Marathon products are available from the following distributors:

Wesco
buy.wesco.com
866.746.3519

Anixter
Anixter.com
866.746.3519

230465D007
D231004-VF



Enduring Quality, Exceptional Value

www.marathonbroadband.com

Specifications

Part Number	Cable Range (Outer Jacket Diameter)		Max Interval Between Grips (ft.)		Maximum Cable Load (lbs. per grip)	
	in.	mm	ft.	m	lbs.	kg
MAR-HGC14X	0.29 - 0.4	7.4 - 10.2	200	60.96	150	68.04
MAR-HGC38X	0.4 - 0.6	10.2 - 15.2	200	60.96	150	68.04
MAR-HGC12X	0.6 - 0.75	15.2 - 19.1	200	60.96	200	90.72
MAR-HGC58X	0.75 - 1	19.1 - 25.4	200	60.96	400	181.44
MAR-HGC78X	1 - 1.35	25.4 - 34.3	200	60.96	400	181.44
MAR-HGC114X	1.35 - 1.75	34.3 - 44.5	200	60.96	525	238.13
MAR-HGC158X	1.75 - 2	44.5 - 50.8	200	60.96	525	238.13
MAR-HGC214X	2 - 2.5	50.8 - 63.5	200	60.96	525	238.13

*Additional part numbers are available upon request

WARNING:

Never exceed the maximum cable load per grip or the maximum interval of 200' (61 m) specified in the table above. Please contact technical support for additional assistance.

Marathon products are available from the following distributors:

Wesco
buy.wesco.com
866.746.3519

Anixter
Anixter.com
866.746.3519

230465D007
D231004-VF