

# Marathon Site Hardware Accessories

## Hardware (Lugs, Screws, Nuts and Washers)

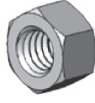
Marathon offers numerous lugs, screws, nuts, and washers to support telecommunications site installations as a part of our site hardware accessories line. We offer the hardware needed for deployments across a variety of unique sites.



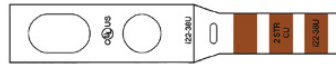
Split lock washer



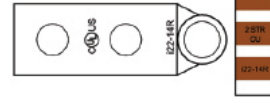
Washer



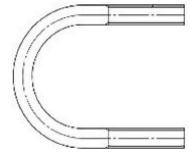
Hex nut



Long barrel copper compression lug with inspection window



Right angle long barrel copper compression lug with inspection window



Galvanized U-bolt kit

Part Number	Product Description	Type
MAR-GUB4240X	U-bolt Assembly, 1/2"-13 UNC X 2-1/2" X 4", Galvanized	U-bolt Assembly
MAR-GUB4356X	U-bolt Assembly, 1/2"-13 UNC X 3-5/8" X 6", Galvanized	U-bolt Assembly
MAR-SN02100	Nut, 1/4"-20 UNC, Stainless Steel, PASS, Hex	Hardware
MAR-SN03100	Nut, 3/8"-16 UNC, Stainless Steel, PASS, Hex	Hardware
MAR-GN04100	Nut, 1/2"-13 UNC, Galvanized, SAE J995, Grade 5, Hex	Hardware
MAR-SWF02100	Washer, 1/4", Stainless Steel, Flat	Hardware
MAR-SWL02100	Washer, 1/4", Stainless Steel, Lock	Hardware
MAR-GWF03100	Washer, 3/8", Flat, ASTM F844, USS, galvanized	Hardware
MAR-GWL03100	Washer, 3/8", Lock, Galvanized	Hardware
MAR-SWL03100	Washer, 3/8", Stainless Steel, Lock	Hardware
MAR-SWF03100	Washer, 3/8", Stainless Steel, Flat	Hardware
MAR-GWF04100	Washer, 1/2", Flat, ASTM F844, USS, Galvanized	Hardware
MAR-GWL04100	Washer, 1/2", Lock, Galvanized	Hardware
MAR-i2214	Lug, #2 Stranded, with Inspection Window, 2 Hole, 1/4" Holes, 5/8" Spacing, Brown, AT&T CEQ# ANT.16587	Lug
MAR-i2214R	Lug, #2 Stranded, with Inspection Window, 2 Hole, 1/4" Holes, 5/8" Spacing, Brown, 90 Degree Right Angle	Lug
MAR-i2S214	#2 Solid & #4 Stranded, 2-Hole, 1/4" Holes, 5/8" Spacing, Long Barrel Copper Compression Lug with Inspection Window	Lug
MAR-i238	Lug, #2 Stranded, with Inspection Window, 1 Hole, 3/8" Hole, Brown, AT&T CEQ# ANT.16586	Lug
MAR-i2S2381	#2 Solid & #4 Stranded, 2-Hole, 3/8" Holes, 1" Spacing, Long Barrel Copper Compression Lug with Inspection Window	Lug
MAR-i2238u	Lug, #2 Stranded, with Inspection Window, 2 Hole Universal, 3/4" - 1" Slotted Spacing, Brown, AT&T CEQ# ANT.16588	Lug
MAR-i6238U	Lug, #6 AWG, 3/4", 2H Universal, 3/4"-1" SPA, with Inspection Window, Stranded, Blue AT&T CEQ# ANT.16583	Lug
MAR-i6214	Lug, #6 Stranded, with Inspection Window, 2 Hole, 1/4" Hole, 5/8" Spacing, Blue AT&T CEQ# ANT.16582	Lug
MAR-i8214	Lug, #8 Stranded, with Inspection Window, 2 Hole, 1/4" Holes, 5/8" Spacing, Red, AT&T CEQ# ANT.16577	Lug
MAR-i141014	Lug, #14 - #10 Stranded, with Inspection Window, 2 Hole, 1/4" Holes, 5/8" Spacing, Yellow, AT&T CEQ# ANT.16572	Lug

Please visit [www.marathonbroadband.com](http://www.marathonbroadband.com) for a comprehensive list of available site hardware accessory SKUs and spec sheets.